

“Innovative Artist”

Lj  
Levasseur.com



“Creator of PaletteArt™”

A Canadian born business woman, Lisa began painting in 2010 and quickly emerged an artist.



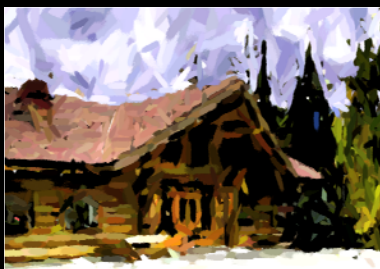
She started expressing a talent obsessively drawing horses as a child. Growing up she was drawn to animals, crawling into a stockyard full of cattle as a baby and sneaking out of bed to sleep with the dog. On family trips to Jasper National Park, she'd have wildlife eating out of her hand.

She left home at twelve with her parents support, determined to pursue a career training horses in California.

Eight years later, after the death of her trainer, she returned home. In 1989, she opened a horse training facility in Stony Plain, AB in partnership with her dad. By age 23, injuries and health issues threatened to cripple Lisa for life. The fight seemed hopeless after a few more years and she finally gave up her dreams.



Since then, with family and financial pressures, running restaurants and hotels, health set backs, she made little time for art or horses.

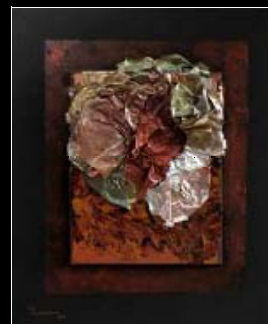


Today Lisa lives fairly divorced from society in the rocky mountain wilderness not far from Jasper. Somewhat of a workaholic, she loves running Terracana Ranch Resort. However, surrounded by so many great adventures and managing health issues, she felt imprisoned.

Even with very dedicated staff, years of hospitality experience and hard work, the resort had yet to fulfill her vision.

Lisa created a new art form using recycled paint to form 3D sculpted paintings unlike anything seen before.

She took a couple months off in 2010 and began painting. Frustrated, unable to put her vision on canvas, she decided to try abstract. She took all the paint she wasted trying to create a masterpiece and turned it into artwork. Then developed a range of different techniques for using recycled paint.



After two months, her first collection of over 60 works was almost sold out and attracting the attention of industry professionals.



Within a year, she was featured as one of the most original artists creating today in The Modern Masters Art Book. Pictured with 3 of her works, a middle self portrait Broken Boundaries, depicts her journey to quit fighting, let go pain and re-connect with passion in life. It was part of month long exhibition in Chelsea, New York Also called Broken Boundaries featuring artists in the book. She feels very thankful to have the opportunity to pursue an art career.

Lisa found it near impossible to break into the art industry even with something as innovative as PaletteArt™ and other advantages.

Her determination and business knowledge made all the difference. She can understand how hard many artists also struggle. With all of the resources she has to offer at Terracana, Lisa can help other artists create their own success stories. Collaborate with Lisa at <http://www.facebook.com/Artist.LJLevasseur>







Terracana Ranch Resort

## “Creative Vision”

The success promoting PaletteArt™ as a new art form gives Lisa a chance to help other artists further their art career.

Terracana offers something very special, as a vacation resort and as a centre for the arts. Lisa's recently added art studio, the peace and surrounding wilderness make it the ideal place for artists to host and enjoy residencies, art retreats & classes.



Beginners and artists alike are invited to enjoy the perfect setting in which to develop their talent, visit The Arts at [www.terracana.com](http://www.terracana.com)



Signup to receive art news with more info on programs, upcoming retreats. We offer a full range of other services such as portfolio & web design, business development and gallery representation, worldwide marketing, networking, sales & public relations. Pay for arts programs or donate work in exchange.

Industry professionals can learn how to use PaletteArt™ and recycled paint to create new products and opportunities in the art world.

Any Artist or gallery can submit work for free website listing and jury consideration. Winning Artists will be offered scholarship for a full residency program at Terracana. They will also be featured as top contemporary artist with opportunity to show at New York Art Expo and Spectrum Indian Wells.



Calling All Artists . . . Enter to Win at [www.topcontemporaryartist.com](http://www.topcontemporaryartist.com)



## “Community Support”

Lisa wants to give something back to local communities by helping create a stronger tourism market and economy.

Moving to the Robson Valley, Lisa came to appreciate the lifestyle, how hard people have to struggle to maintain it and their need for economy. The local logging industry's almost entirely shut down, along with many other businesses. The area has a lot to offer as a tourist destination, but is under developed.



Without a tourism market or many local resources, running Terracana has been a tremendous challenge.



She is very pleased to be working with local artists, photographers, wood workers, potters, jewelry and art glass makers. There are over 70 artisans in the Robson Valley, Lisa is hosting [www.rockymountainarttour.com](http://www.rockymountainarttour.com) to draw some of the millions of tourists visiting Jasper only an hour away, out to see them. You can visit and support all of us by becoming a fan at [www.facebook.com/RockyMountainArtTour](https://www.facebook.com/RockyMountainArtTour)

Join us at [www.rockymtnartfest.com](http://www.rockymtnartfest.com) and take a self guided tour through the National Parks visiting artists along the way.

Showcasing all of our artist's at Terracana, we also represent them on virtual galleries. With multi media ad campaigns furthering connections to agents, galleries & buyers around the world. Lisa hopes to build a community arts centre facilitating all types of art. Visit our [artworkgalleries.org](http://artworkgalleries.org)

